

## Filling process VitoMat III 150 ml



Wear work clothes, gloves and goggles.



**Step 1:** Filtrate the colour before filling.



**Step 2:** Put the container with varnish on the bin and insert the suction hose.



**Step 3:** Take off the nozzle.



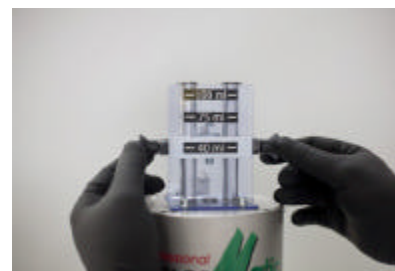
**Step 4:** Insert distance adapter, ord.no. 257094.



**Step 5:** Set a 150 ml spray can on the distance adapter. In doing so place the can valve exactly under the filler neck and lock it with the lever.



**Step 6:** Close the door.



**Step 7:** Adjust contents. You can adjust in this way for a 400 ml spray can either 100 or 75 ml.



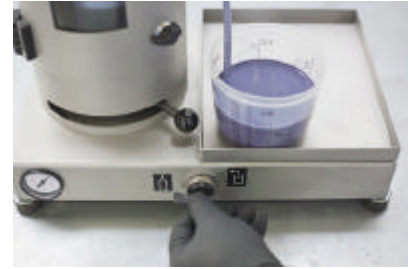
**Step 8:** A vernier adjustment is possible with a screw-wrench no. 17.



**Step 9:** With the switch on the front you can choose either the position „suction“ (on the right) or „filling“ (on the left).



**Step 10:** Turn the switch to „suction“ – the colour will be drawn into the machine. Depending on the viscosity of the lacquer takes it more time.



**Step 11:** Turn the switch to „filling“ – the lacquer will be pressed into the spray can.

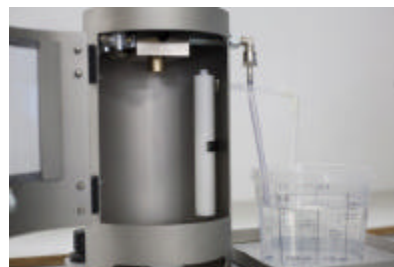


**Step 12:** Open the door, take out spray can. The filling machine is now ready to fill more spray cans with the same lacquer.

## Making a cleaning closed loop



**Step 1:** Instead of the varnish container put a container with the filled lacquer suitable solvent under the suction hose.



The inside of the machine before cleaning. On the right you can see the white bar, which is blocking the filling process at cleaning.



**Step 2:** Put the bar between filler neck and can plate.



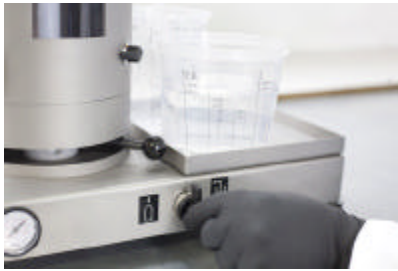
**Info:** The bar must set exactly on the filler neck.



**Step 3:** Lock the can plate.



**Step 4:** Close the door and take under the second hose a collecting tray for the contaminated solvent. Insert the hose.



**Step 5:** Turn the switch to „suction“. The solvent will be sucked.



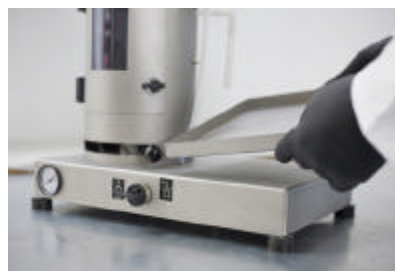
**Step 6:** Then switch to position „filling“. Because the filling is blocked, the contaminated solvent will be conducted into the collecting tray.



**Info:** Repeat this several times.



**Info:** Were water based varnishes filled, for rust protection you should finally rinse with solvent several times.



**Info:** The bin can be taken off for cleaning.

**Please note:** At filling of water-based lacquers it's urgently necessary that the cleaning loop will be repeated till clean water is coming out of the machine. Then rinse well urgently with thinner! Elsewise the pump could fix.

## Possible causes of defects

- Filling machine contaminated with lacquer residuals -> the filling process can be damaged.
- Colour wasn't filtrated before filling -> Attention! Dried lacquer residuals can damage the filling process.

### At cleaning:

- The bar wasn't placed exactly.
- It wasn't rinsed often enough.
- Attention: at every colour change the cleaning process must be repeated till the solvent is clear.



**Info:** As soon as a varnish drop is coming out of the pictured hose an impervious core is damaged and must be replaced. For it send the machine to the manufacturer.